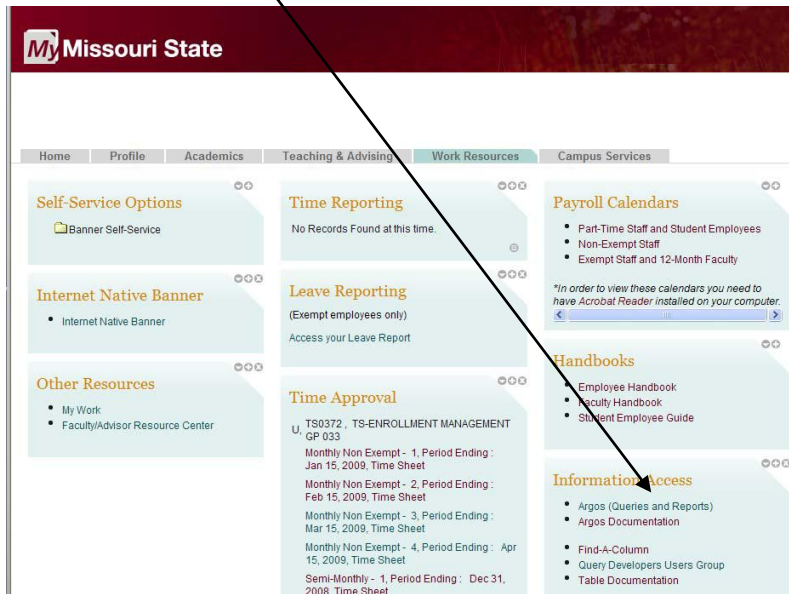


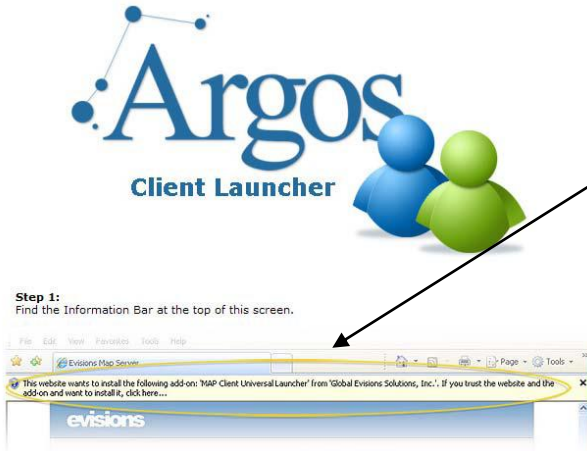
1. You will need to have IE7 or IE8 to run Argos.
2. Open Argos. There are several different ways to get to Argos. This is our recommendation: Login to My Missouri State, select the “Work Resources” tab, and choose the “Argos (Queries and Reports)” link on the “Information Access” channel.



3. An alternative option is to go to the Query Developers Users Group (QDUG) web page ([www.missouristate.edu/QDUG](http://www.missouristate.edu/QDUG)). You can also get to this site by typing “QDUG” in the web search box or clicking on “q” on the site map. Then select the “ARGOS” link on the left navigation list.



4. If this is your first time to open Argos from a particular computer, then you will see instructions on the page for how to setup Argos to work with your Internet browser.



5. You will be prompted with a login window. Enter your UserID and password (same that you use for My Missouri State, Bearmail, etc.).

The image shows a "Login" dialog box. The title bar is blue and says "Login". On the left is a computer monitor icon. The main area has a "Username" field with "abc123" entered and a "Password" field with "\*\*\*\*\*" entered. There is a "Remember this user" checkbox and a "Remember the password for this user" checkbox. At the bottom, there is a "Login" button and a "Cancel" button. The text "Edit Servers Server: DRYSDALE.MISSOURISTATE.EDU ( DRYSDALE.MISSOURIS" is visible at the bottom left. The version number "Version 3.1.4.298" is at the bottom left. An arrow points from the text in step 5 to the "Username" field.